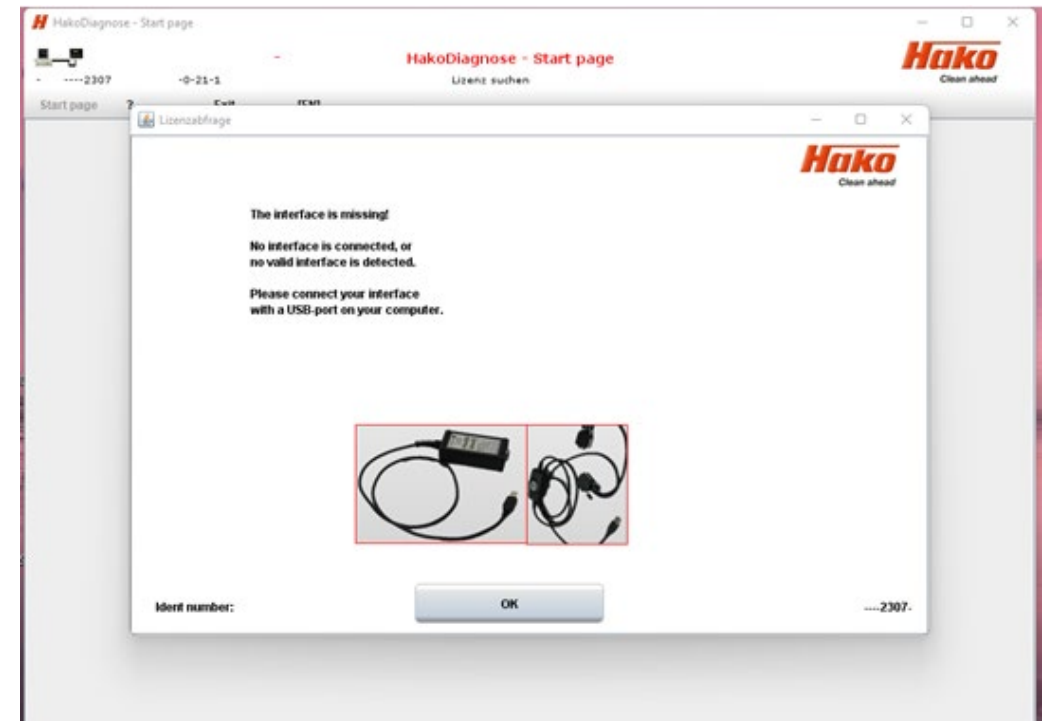
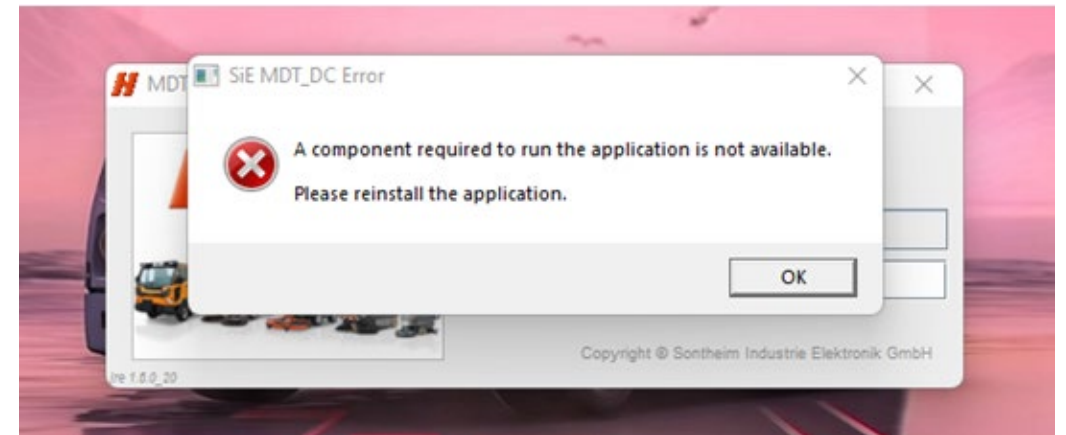


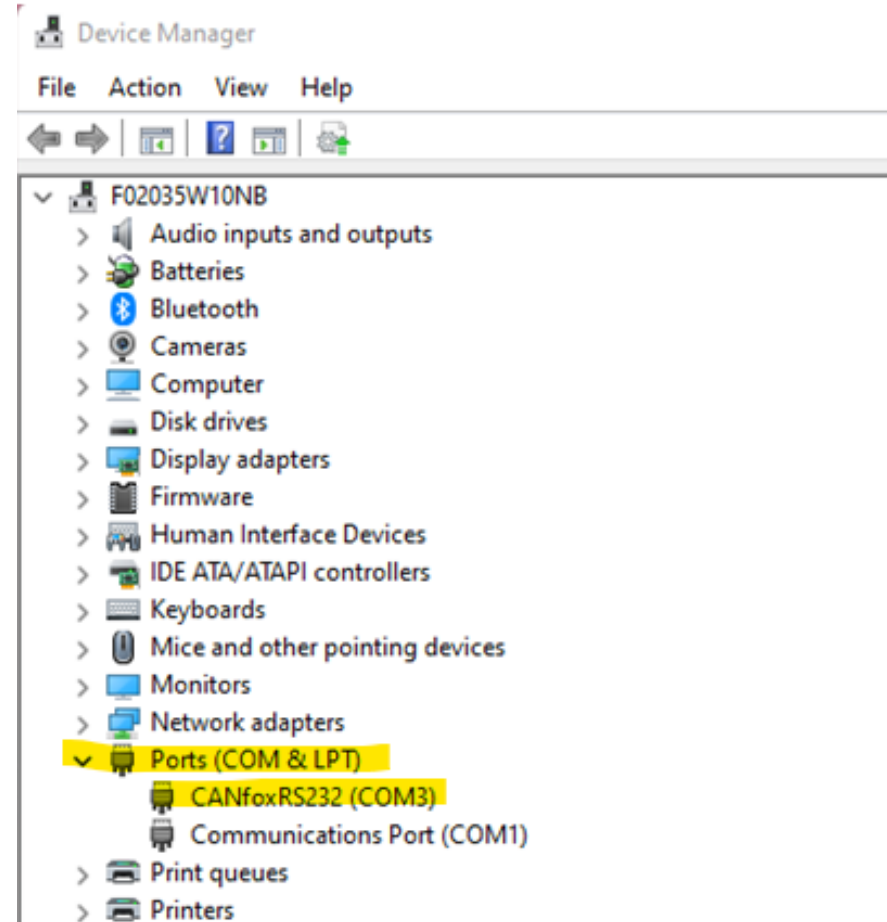
HAKO DIAGNOSTIC SOFTWARE FIX

How to apply the setup file fix and contacting Hako Support for all Software issue & fixes.

IF YOU ENCOUNTER
EITHER ONE OF THESE
ERRORS
WHEN TRYING TO RUN
THE HAKO DIAGNOSTIC
SOFTWARE



1ST VERIFY THAT
YOUR LAPTOP IS
RECOGNIZING THE
USB CAN-FOX
CABLE (#3502430)





Home

CLICK HERE

AFTER CAN-FOX VERIFICATION GO
TO POWERBOSS.COM. ONCE THERE
CLICK ON PARTS & USER MANUALS

BRILLIANTLY FORMULATED
SCRUBBING ADDITIVES



Minuteman and Powerboss Technical Manuals

INDEX / POWERBOSS

Directory

- Batteries
- Battery Chargers
- Bulletins
- Combination Sweeper-Scrubber
- Critical Filter Vacs
- DS-2 Mist It Sprayer
- Detergent New Chemicals
- Engines
- Hako Citymaster
- Hako Jonas Units
- Hako MultiCar
- Hakomatic
- Instructions
- PowerBlast
- QRE
- Quick Reference

**NEW TAB OPENS
SCROLL DOWN UNTIL
YOU FIND SERVICE
MANUALS**

 QRE

 Quick Reference

 Recommended Stocking Parts Lists

 Rider Scrubbers

 Rider Sweepers

 Service Manuals

 Training Materials

 Walk Behind Scrubbers

 Walk Behind Sweepers

 Warranty Info

CLICK HERE

This directory does not contain any files.

Directory



Admiral



Apex



Armadillo



Nautilus



Nautilus Electric (SM45)



Phoenix



Scrubmaster



Sweepmaster 1500 (Apex 64)

CLICK HERE



Directory

 [Hako Diagnose Setup](#)

 [Service Info-120](#)

 [Service Info-175](#)

 [Service info-260](#)


 [Service info-400](#)

CLICK HERE

File

 [11.1.2 Flash software.pptx](#)

 [14.Troubleshooting of the Can-Bus on the Scrubmaster series.pdf](#)


 [15.Troubleshooting Error #14 On Drive Controller.pdf](#)

 [Scrubmaster_B120R_en_R_1_03.pdf](#)


 [Scrubmaster_B175R_en_1_06_2.pdf](#)


 [Scrubmaster_B260R_en_1_05.pdf](#)

Directory

 [Converting PB serial to HAKO serial](#)

 [Flashing SD card](#)

 [Hako-Program download 2022](#)

 [Hako-Program download 2023](#)

 [Hako-program download 2021](#)

CLICK HERE

File

 [11.1.2 Flash software.pptx](#)

 [12.Serial Number Conversion.pdf](#)

 [Anleitung Guide HakoDiagnose Setup.pdf](#)

 [Beschreibung HakoUpdateToolDE20191218.pdf](#)

 [Hako Diag Install set ups.pdf](#)

 [HakoDiagnoseMainSetup2020.exe](#)

 [Hako Updater.docx](#)

 [Lic-Key and softward requesting.pdf](#)

 [SD card Flash from Freidhelm.docx](#)

File ▲



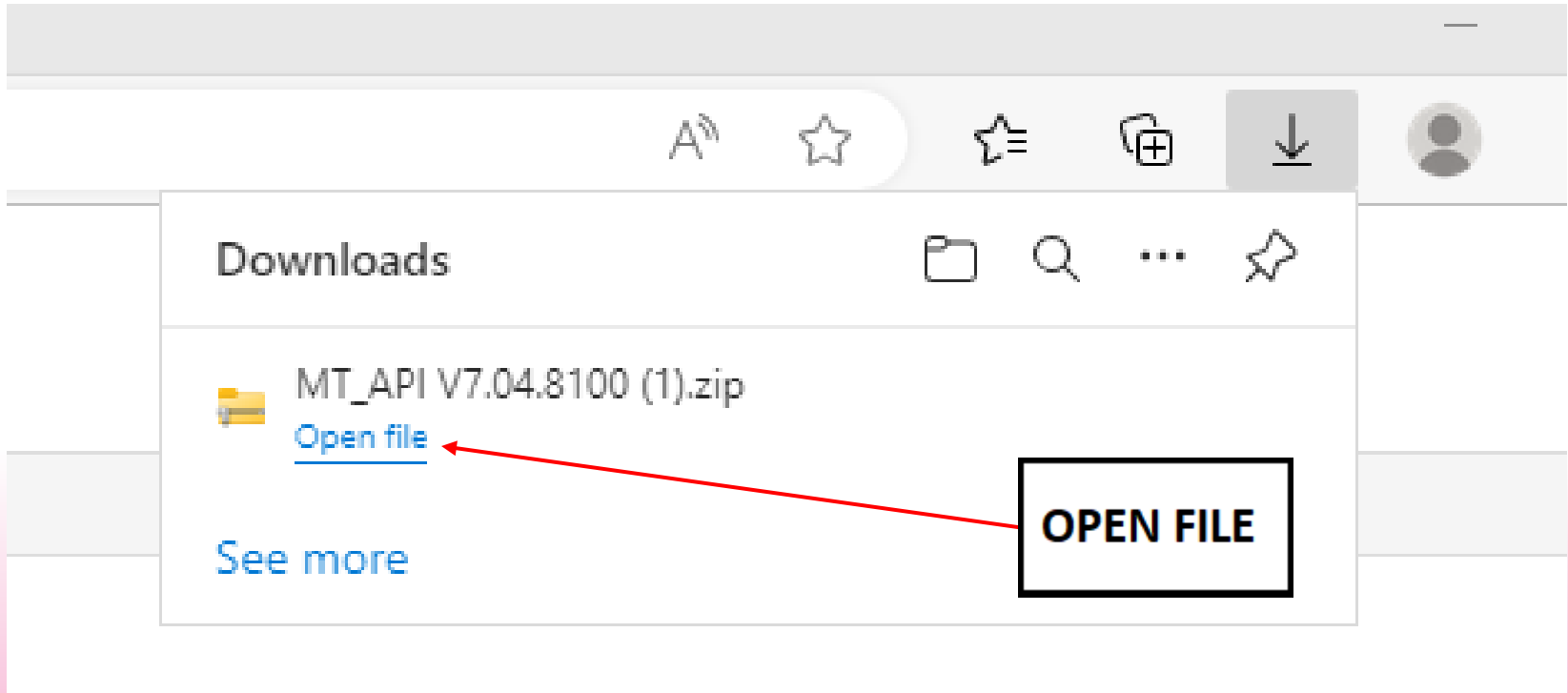
HakoUpdateSetup2023_00.exe

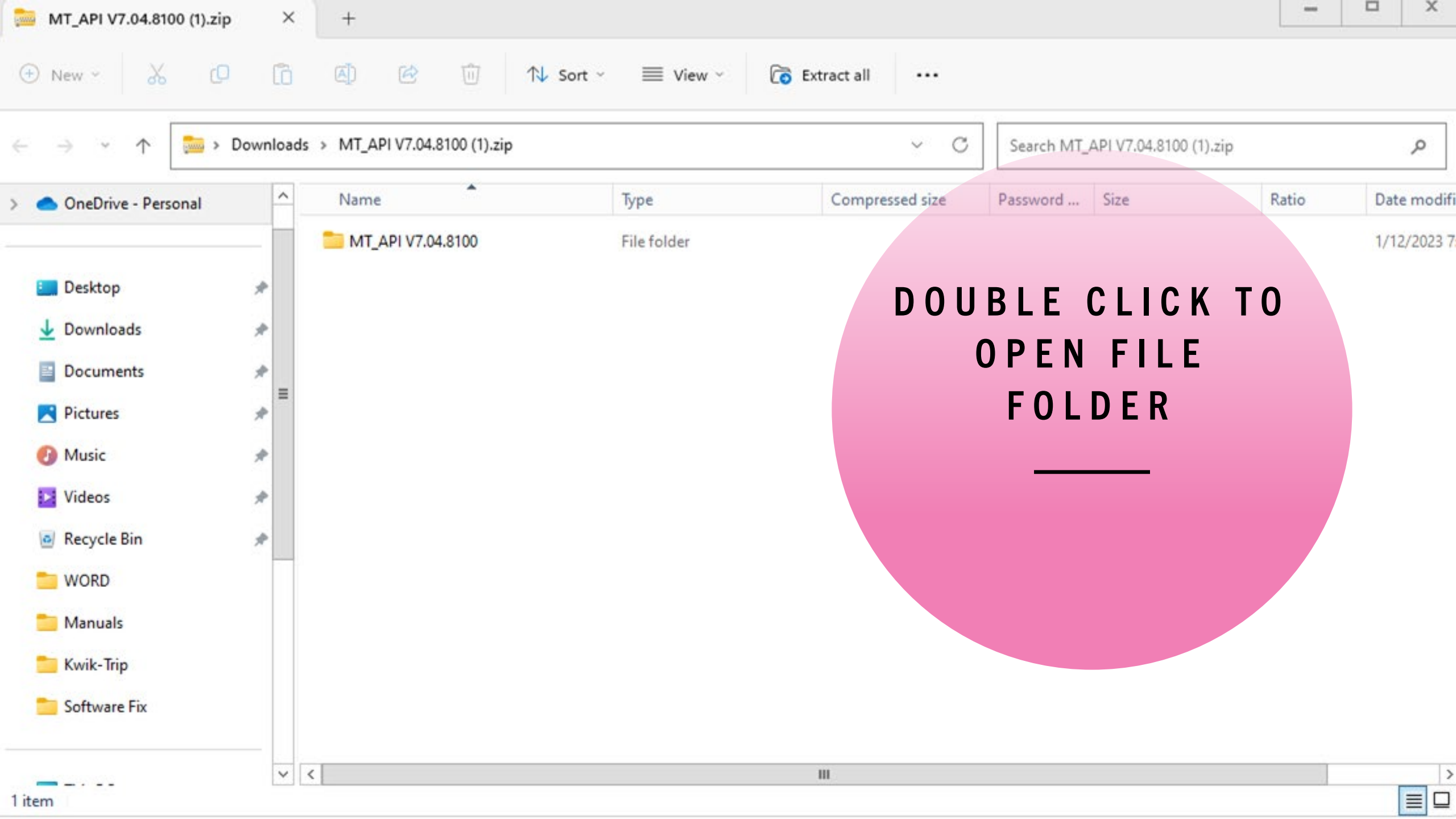


MT_API V7.04.8100.zip

**DOUBLE-CLICK
FILE TO
DOWNLOAD**







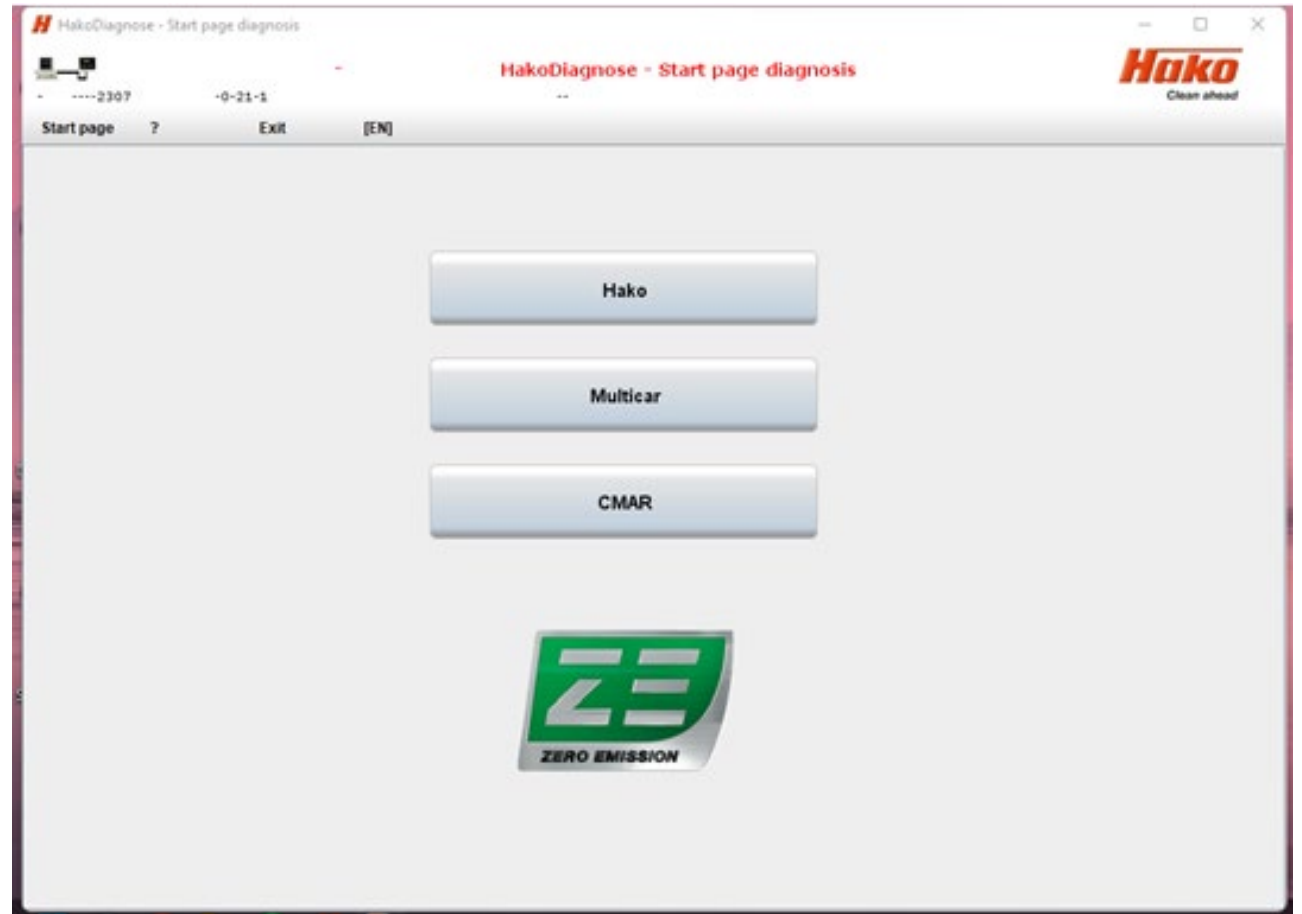
**DOUBLE CLICK TO
OPEN FILE
FOLDER**

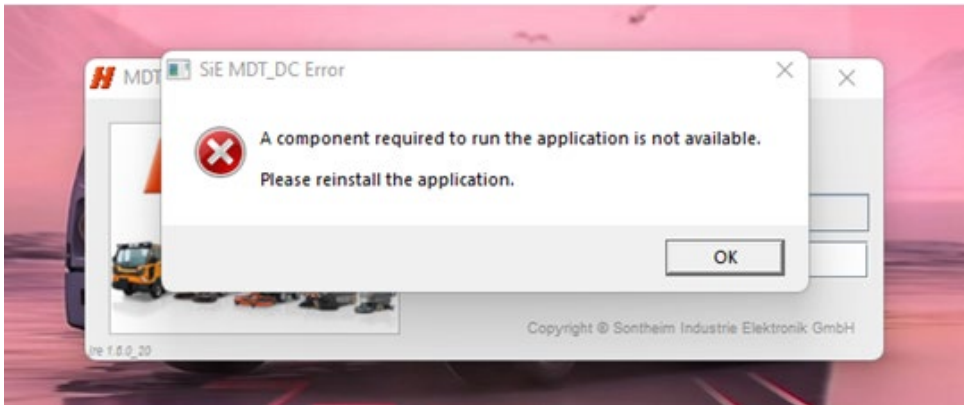
- Desktop
- Downloads
- Documents
- Pictures
- Music
- Videos
- Recycle Bin
- WORD
- Manuals
- Kwik-Trip
- Software Fix

Name	Type	Compressed size	Password ...	Size	Ratio	Date modified
Components	File folder					1/12/2023 7
data	File folder					1/12/2023 7
License	File folder					11/15/2018
setup.exe	Application	398 KB	No	433 KB	9%	11/15/2018



ONCE SETUP.EXE FILE IS
FINISHED INSTALLING.
RESTART LAPTOP, WITH CAN-
FOX USB CABLE INSTALLED.
LAUNCH THE HAKO DIAGNOSE
PROGRAM & YOU SHOULD GET
THIS SCREEN





IF YOU STILL GET THESE
ERRORS AFTER INSTALLING
SETUP.EXE FILE, YOU WILL
NEED TO TAKE A SNAPSHOT
OF THOSE ERRORS. YOU
WILL THEN EMAIL
HAKODIAGNOSE@HAKO.COM
WITH THOSE SNAPSHOTS
ATTACHED TO THE EMAIL.

